

# THE HUMAN BODY

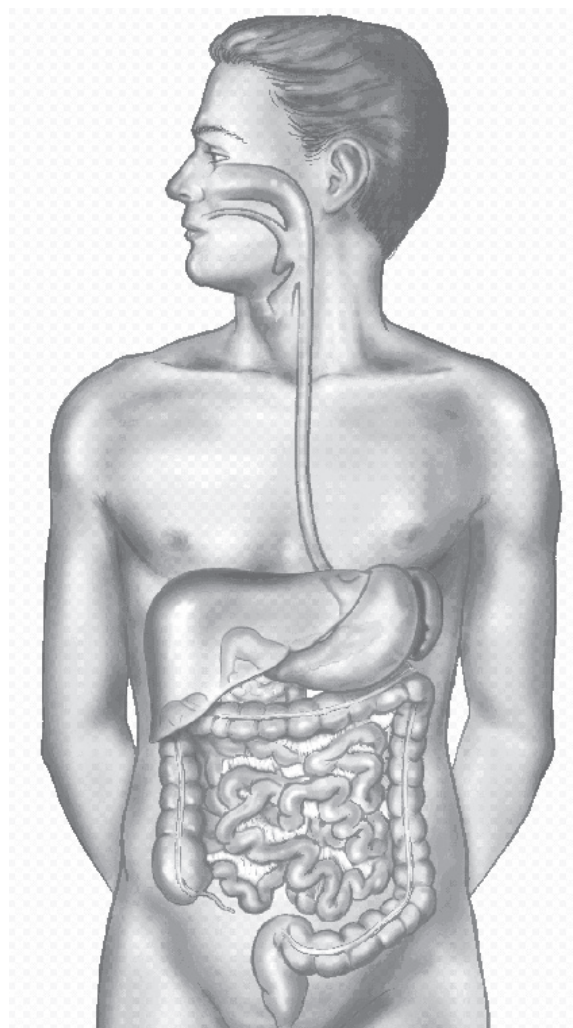
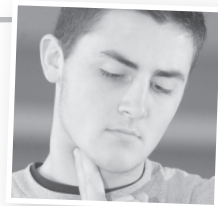
## Digestive System

NAMES OF MEDICAL PARTNERS

---

---

---



**Locate and define these parts of the digestive system.**

- 1.** Salivary glands—three pairs of glands (parotid, submandibular, sublingual) that contain amylase found in the mouth that starts the digestive process
- 2.** Epiglottis—flaplike organ that covers the trachea so that food will not get into the respiratory system
- 3.** Esophagus—thick muscular organ that has one-way contractions (peristalsis) to move food down the stomach region
- 4.** Stomach—muscular organ that churns the food with acidic gastric juices and adds pepsin, which breaks down proteins into amino acids (producing chyme in 3 to 5 hours)
- 5.** Liver—large organ that changes glucose to glycogen, stores all nutrients until needed, cleanses the blood of waste matter and poisons, secretes bile for fat digestion, and neutralizes stomach acids
- 6.** Gallbladder—small pear-shaped organ on the back side of the liver that stores bile (thick greenish or yellow fluid) and releases it into the small intestine when stimulated to help break up fats for digestion
- 7.** Pancreas—6-inch (15-centimeter) irregular soft gland that produces trypsin and chymotrypsin (for digesting protein), amylase (for digesting carbohydrates), and lipase (for breaking down fats completely)
- 8.** Small intestine—23 feet (7 meters) of musculature that has mucosa glands that produce gastric acid and enzymes and millions of villi projections for efficient absorption of nutrients
- 9.** Colon—responsible for moving all indigestible material along this wide tube and with the help of some digestive bacteria (*E. coli* and others) transforms the material into feces or solid waste
- 10.** Rectum—organ that serves as a storage facility for feces
- 11.** Appendix—short close-ended tube found where the small intestine and colon connect that seems not to have real function today but when blocked or ulcerated can cause acute pain and tenderness in the lower right part of the abdomen